

SINCOTRON



SINCOTRON



- Sincotron is a Reliable Electronics Supplier with long term customer relationships
- We offer our customers a wide selection of Products from simple tools to entire manufacturing lines.
 - Profound Training and support services are included with all our products.

About Sincotron



SINCOTRON



- Personnel Grounding
- ESD Lab Coats & Polo Shirts
- ESD Office Equipment
- ESD Waste Bins
- ESD Table & Floor Mats
- EPA Consumables
- ESD Packaging
- ESD Dry Cabinets
- ESD Brushes
- ESD Chairs
- ESD Gloves
- EPA Labels
- Splice Tapes & Stencil rolls
- ESD Safe Bottles
- SMT Trolleys
- Sticky mats
- PCB Magazine Racks
- ESD Flux Bottles
- Ionizers
- ESD Shoe Covers

Sincotron ESD Product Range





Metal-in
shielding bags



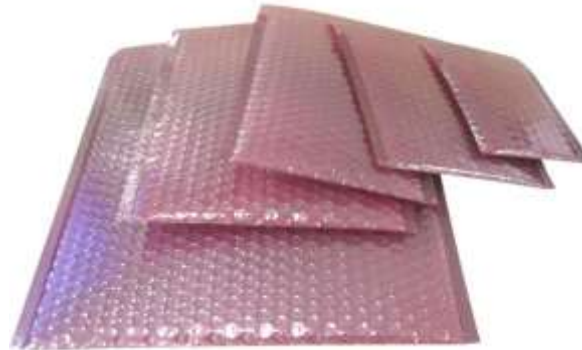
Moisture barrier
bags



Metal-out
shielding bags



Anti static pink
bags



Bubble shielding
bags



Anti static pink
bubble bags

Sincotron Anti Static - Packaging





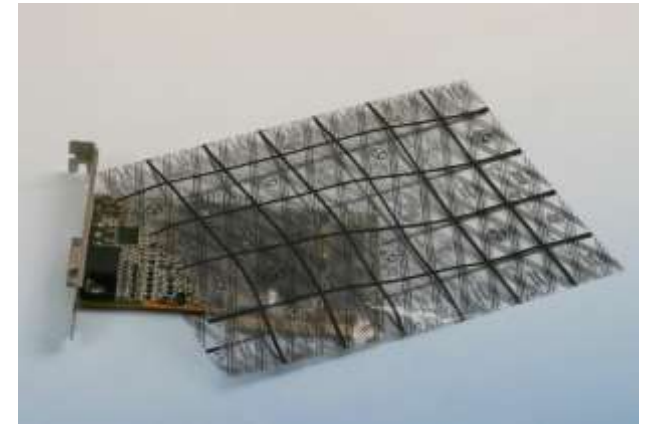
Square Shield Bags



ESD Pink Stretch Film Roll

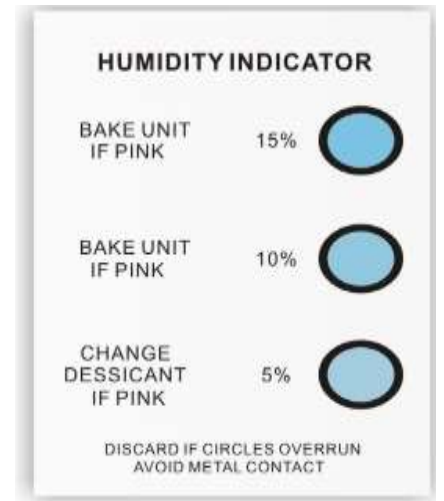
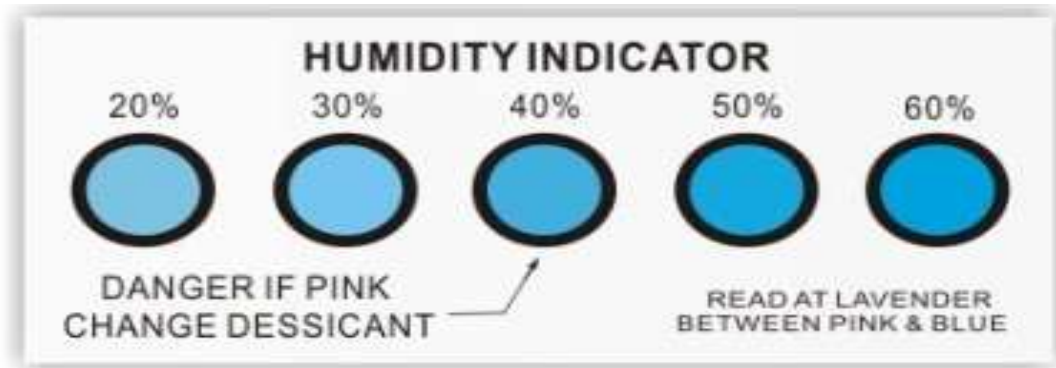
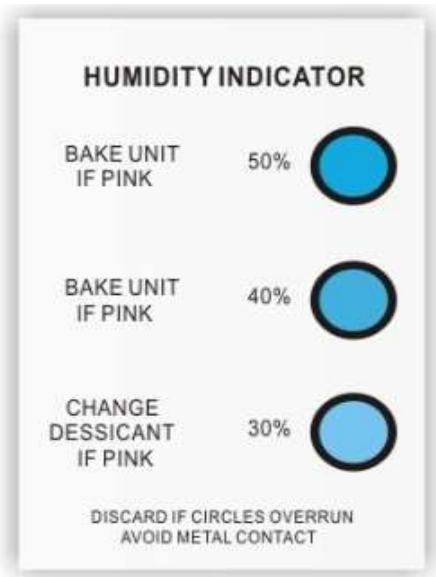


Gusset Shield Bags

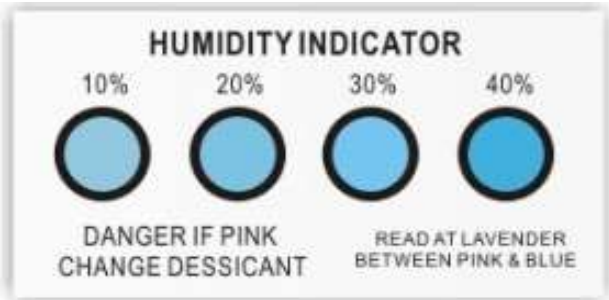
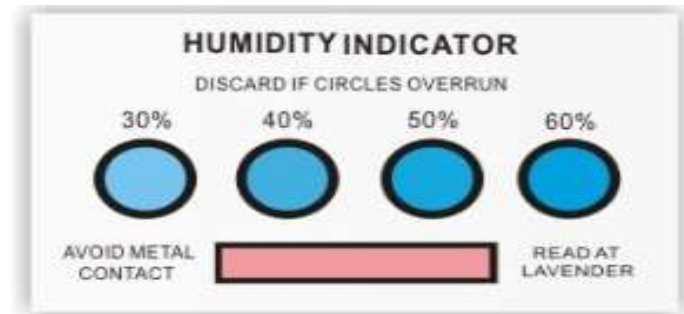
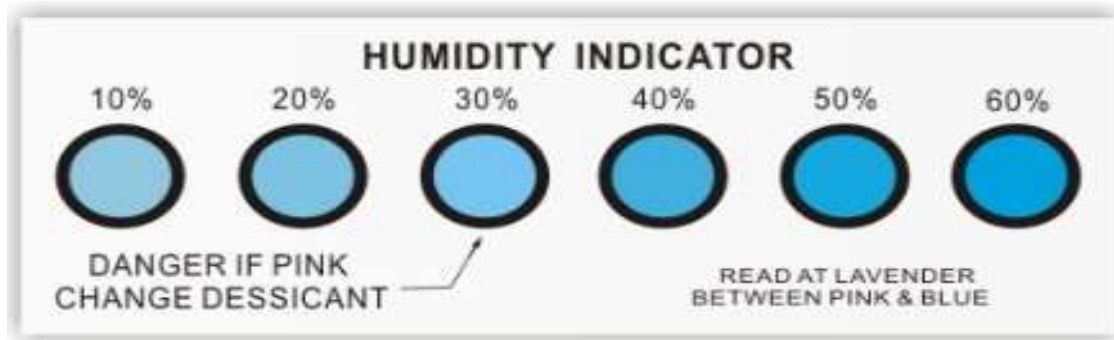


Sincotron Anti Static - Packaging





HIC Cards with Cobalt – No Cobalt – Metal Free



Sincotron – HIC Cards





ESD Economy
Smooth Matting



ESD Quality
Smooth Matting



ESD Anti Fatigue Matt



ESD Permanent
Veneer



ESD Grid
Curtain



ESD Textured
Matting

Sincotron Anti Static – Matting





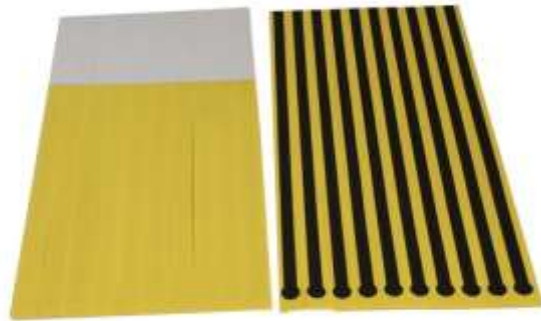
Disposable Heel Grounders
Dispenser 30cm



Sole Grounders



Toe Grounder



Disposable Heel grounders
30cm & 60cm



Economy Heel
grounder



Red Heel
Grounder

Sincotron – Heel Grounders





Green Snap Lock Heel Grounder



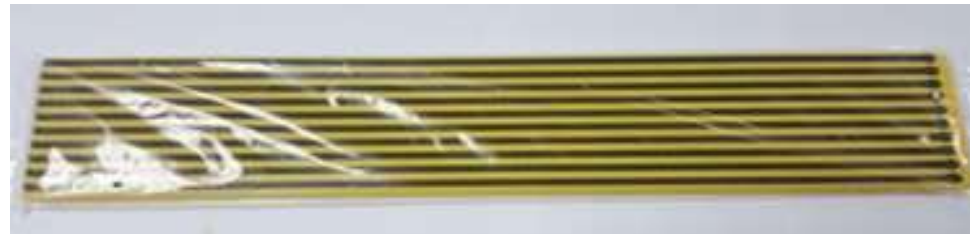
Disposable Heel Grounders
Dispenser 60cm



Yellow Sole Grounder



Non Woven Shoe Cover with
Ribbon Strip



Disposable Heel Grounders 60cm



Blue Economy Heel Grounder

Sincotron – Heel Grounders





Economy Wrist Straps



PU Coil Cords



Red Wrist Strap



Metal Wrist Strap Set



Economy Wrist Straps Sets



Anti Allergic Wrist Straps





Black Metal Wrist Straps



Silver Metal Wrist Straps



Blue Metal Wrist Straps



Yellow Bench Block



Disposable Wrist Band



Black Bench Block





Dual Wire Fabric Wrist Strap Set



Grounding Cord



Metal Wire Fabric Wrist Strap Set



Short Ground Cord



Universal Grounding Cord Set



Snap Adapter Set

Sincotron – Wrist straps & Cords





Anti Allergic Comfort Wrist Bands



Anti Allergic Wrist Band with Print

Clean Room Silicone Wrist Band

Sincotron – Wrist straps & Cords



Anti Allergic Wrist Bands Range



Sincotron – Wrist straps & Cords



Comfort Adjustable Wrist Band Range



Sincotron – Wrist straps & Cords





Electro Static Field Meter



ESD Black Case



Digital Megohmmeter Set



Economy SRM Tester



Wrist Strap & Footwear Tester

Sincotron – Test Equipment





Constant Monitor 1 Port



Constant Monitor 2 Ports



Ground Box 2 x Banana



Ground Box 2 x Banana



Ground Box 2 x Banana

Sincotron- Grounding Monitors





EU & UK EARTH PLUGS



Sincotron – Yellow Earth Plugs





Sincotron – Yellow L- Brackets & Facility Brackets





EPA adhesive tapes



ESD & Regular Kapton tape



Packaging tape



ESD Grid Tape



One Color & Two Color Floor tape

Sincotron - Tapes





TWO COLOR FLOOR TAPE 50mm x 33m



YELLOW FLOOR TAPE APPLICATOR



ONE COLOR FLOOR TAPE 50mm x 33m



**ONE COLOR REFLECTIVE FLOOR TAPE
50mm x 50m**



GLOW IN DARK FLOOR TAPE



**TWO COLOR REFLECTIVE FLOOR TAPE
50mm x 50m**





File holder &
drawer



ESD pens



ESD desk pen
holder



ESD stapler



ESD Tape
dispenser



ESD Black Mouse Pad





ESD knife/cutter



ESD keyboard



ESD L Document Holder



ESD Calculator



ESD A4
Clipboard



ESD Scissors

Sincotron – ESD office supplies





ESD 35 L waste bin



ESD 8 L waste Bin



ESD 60 L waste bin



ESD 14 L waste bin



ESD 16 L waste bin



ESD long broom set





ESD Tape Dispensers



ESD Hand tape dispenser



ESD Led Magnifier



ESD Vacuum Cleaner



ESD toolbox



ESD yellow mouse pad





ESD 3 Space File Holder



ESD A4 Document Holder



ESD 3 Layer Tray



ESD Visit Card Holder



ESD Hole Puncher



ESD Quick Release File

Sincotron – ESD Office supplies





ESD A3 Document Holder



ESD Telephone



ESD Rulers



ESD Pc Mouse



ESD Name Card Holder



ESD A4 File

Sincotron – ESD Office supplies





ESD white palm fit



ESD White Non Dipped



ESD white top fit



ESD Grey Top fit



ESD Grey Non Dipped



ESD Grey Palm Fit

Sincotron – ESD Gloves

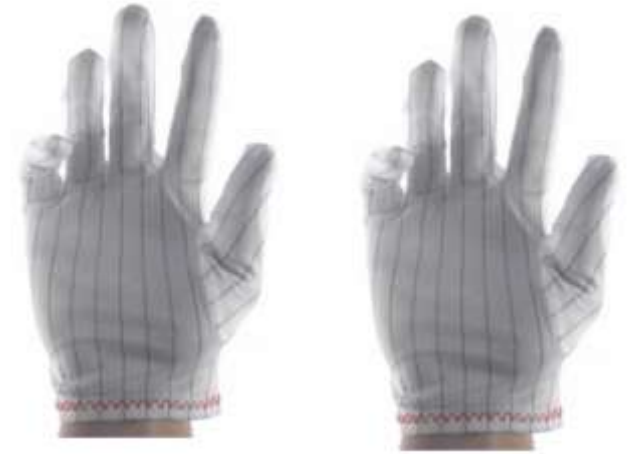




ESD Carbon Stripped Dotted Gloves



ESD Heat Resistant Gloves



ESD Carbon Stripped Gloves



ESD Cut Resistant Gloves Class 5



ESD Half Finger Gloves



ESD Cut Resistant Gloves Class 3

Sincotron – ESD Gloves



ESD brushes



Sincotron – ESD brushes





TSUNODA PLIER TM01



TSUNODA PLIER TM04



XURON ESD CUTTER 170-11



TSUNODA PLIER TM10



KEIBA PLIER MN-A05



XURON CUTTER 170-11





SATA ESD HEAVY DUTY PLIER 75101



SATA ESD ANGLE NOSE PLIER 75131



SATA ESD FLAT NOSE PLIER 75121



SATA ESD HEAVY DUTY CUTTER 75102



SATA ESD WIRE STRIPPERS 75141

Sincotron – ESD Cutters & Pliers





355 x 315 x 315



460 x 400 x 563



535 x 460 x 570



355 x 315 x 580



630 x 530 x 570



355 x 320 x 563

Sincotron – PCB Magazine Racks





PCB Handling Trolley



PCB Handling Trolley



PCB Handling Trolley



PCB Handling Trolley



PCB Dolly Trolley

Sincotron – SMT Trolleys





L480 × W140 × H35mm



L437 × W160 × H30mm



L484 × W175 × H50mm



PCB L Rack 256 x 205 x 95



410 x 145 x 22



PCB L Rack 410 x 283 x 170

Sincotron – PCB Flat & L Racks





SMT Reel Trolley



SMT Wire Trolley



SMT Reel Trolley



SMT Reel Trolley



SMT Wire Trolley

Sincotron – SMT Wire Trolleys





ESD CASTORS 3" , 4" , 5"



CHROMECASTORS



ESD GREY/BLACK CASTORS 3" , 4" , 5"

Sincotron – Castors for Trolleys & Chairs





ESD Containers Many sizes
Available



ESD Component Boxes Many
sizes Available



ESD Trays Many sizes
Available

Sincotron – Circulation Containers





ESD Solvent Pump Bottles



Glass Solvent Bottle

Sincotron – ESD Bottles





ESD Drink Bottle 250ml & 500ml



ESD Solvent Pump Bottles



ESD Water Bottle 250ml & 500ml



ESD Spray Bottle 250ml & 500ml



ESD Flux Bottle with Needle 60ml

Sincotron – ESD Bottles





ESD Blue lab coat



ESD T – Shirts & Polo Shirts
4mm Strip & 10mm Strip



ESD White lab coat



Sincotron – ESD Garments





Stencil rolls



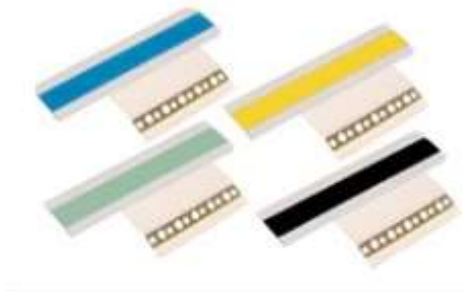
Single splice tapes



Splice tools



Brass A1 clips



Clip & splice tapes



Double splice tapes





Copper Shims



Mobile Splice Cart



Copper Shims on Frame



Copper Shims Tool



Copper Shims on Frame Tool

Sincotron – Stencils & Splice items





Copper Shims



Copper Shims



Siemens Splice Tool



Splice Tool

Sincotron – Stencils & Splice items

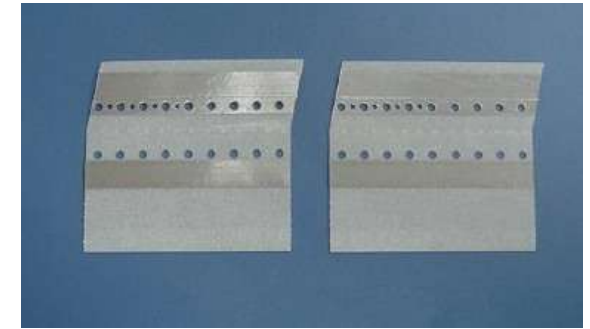




HITACHI SPLICE TAPES



ESD Black Divider Case for Splice Items



SILVER SPLICE TAPES



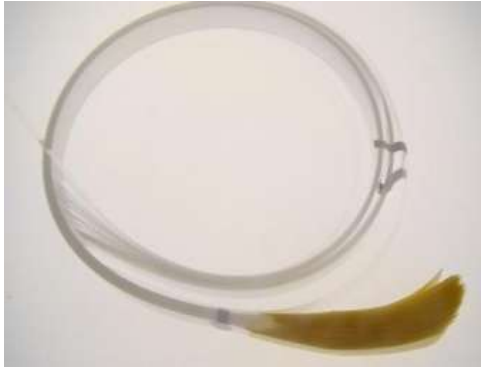
Double Splice With Guide



Double Splice With Guide

Sincotron – Stencils & Splice items





Cover Tape Extenders Yellow



Cover Tape Extenders Black



Cover Tape Extenders Blue



Joint Tape 5 Holes



Joint Tape Tool



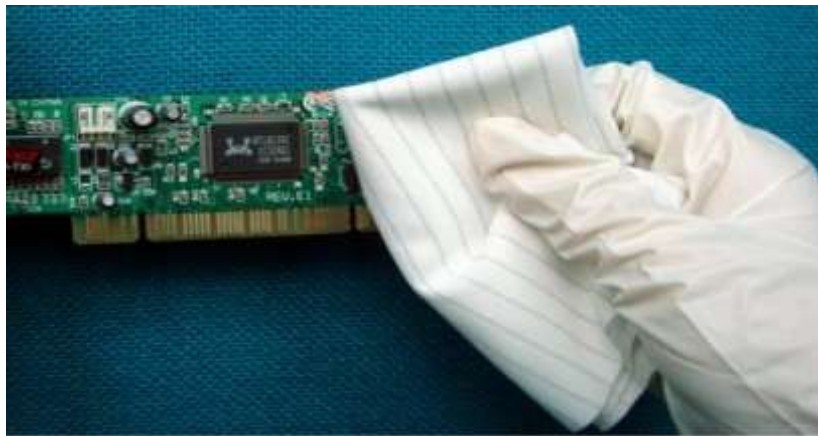
Joint Tape 3 Holes

Sincotron – Stencils & Splice items





ESD Carbon Stripped Clean room Wipers



Sincotron – Clean Room Wipers





Sincotron – Clean Room Items





ESD Grey Fabric Chair



ESD PU Chair with Footring



ESD PU Saddle Stool



ESD PU Chair



ESD PU Sit Stand Stool

Sincotron – ESD Chairs





2" x 2" Attention Label



150 x 300 Adhesive Wall Sign



150 x 300 Adhesive Wall Sign



300 x 300 Adhesive Wall Sign



Lead Free Label 100 x 100



Attention Label

Sincotron – Labels







Sincotron – Labels & Signs





Sincotron – Labels & Signs



ATTENTION

BAG CONTAINS MOISTURE AND ELECTROSTATIC SENSITIVE DEVICES.

DO NOT OPEN OR HANDLE EXCEPT AT AN APPROVED STATIC SAFE WORK STATION AND UNDER APPROVED HUMIDITY CONTROL HANDLING PROCEDURES.

Moisture Barrier and Static Shielding Package

Package Seal Date _____

PRC _____ QTY _____

P/N _____

INITIAL _____

DRI-SHIELD

ATTENTION

BAG CONTAINS MOISTURE AND ELECTROSTATIC SENSITIVE DEVICES.

DO NOT OPEN OR HANDLE EXCEPT AT AN APPROVED STATIC SAFE WORK STATION AND UNDER APPROVED HUMIDITY CONTROL HANDLING PROCEDURES.

DRI-SHIELD
Moisture Barrier and Static Shielding Package

Package Seal Date _____

PRC _____ QTY _____

P/N _____

INITIAL _____ **D100-S-99**

DRI LABEL StaticControl.com

CAUTION

This bag contains

MOISTURE SENSITIVE DEVICES

1. Calculated shelf life in sealed bag: 12 months at $+40^{\circ}\text{C}$ and <math><90\%</math> relative humidity (RH).

2. Peak package body temperature: _____ $^{\circ}\text{C}$

3. After bag is opened, devices that will be subjected to reflow solder or other high temperature process must:

a) Mounted within: _____ hours of factory conditions $\leq 30^{\circ}\text{C}/60\%$.

b) Stored at <math><10\%</math> RH.

4. Devices require bake, before mounting. If:

a) Humidity Indicator Card is >10% when read at 23 \pm 5 $^{\circ}\text{C}$.

b) 3a or 3b not met.

5. If baking is required, devices may be baked for 48 hours at 125 \pm 5 $^{\circ}\text{C}$.

Note: If device containers cannot be subjected to high temperature or shorter bake times are desired, reference IPC/JEDEC J-STD-033 for bake procedure.

Bag Seal Date: _____

Note: Level and body temperature defined by IPC/JEDEC J-STD-020

DATE	TAKEN OUT	TIME IN	INITIALS	REMARKS

CAUTION

This bag contains

MOISTURE-SENSITIVE DEVICES

1. Calculated shelf life in sealed bag: 12 months at <math><40^{\circ}\text{C}</math> and <math><90\%</math> relative humidity (RH).

2. Peak package body temperature: _____ $^{\circ}\text{C}$

3. After bag is opened, devices that will be subjected to reflow solder or other high temperature process must:

a) Mounted within: _____ hours of factory conditions $\leq 30^{\circ}\text{C}/60\%$.

b) Stored at <math><10\%</math> RH.

4. Devices require bake, before mounting. If:

a) Humidity Indicator Card is >10% when read at 23 \pm 5 $^{\circ}\text{C}$.

b) 3a or 3b not met.

5. If baking is required, devices may be baked for 48 hours at 125 \pm 5 $^{\circ}\text{C}$.

Note: If device containers cannot be subjected to high temperature or shorter bake times are desired, reference IPC/JEDEC J-STD-033 for bake procedure.

Bag Seal Date: _____

Note: Level and body temperature defined by IPC/JEDEC J-STD-020

Sincotron – Labels & Signs





FLOOR ADHESIVE SIGNS





Precision Tips



Bent Tips



Tapered Tips



Flexible Tips



Tips Box for 100pcs



Barrel Adapters



Teflon Tips

Sincotron – Dispensing Range





Stainless Steel Tweezers



Black Carbon Tweezers



Changeable Tip Tweezers



ESD Stainless Steel Tweezers

Sincotron – Tweezers





Carbon Fiber Tweezers

Sincotron – Tweezers





SMT Carry Case for Splice Tapes



ESD Divider Case



SMT-1#



SMT-2#



SMT-1# (ESD)



SMT-2# (ESD)

ESD SMT Spare Part Boxes



Squeegee Blades for Printers

Sincotron – SMT Accessories

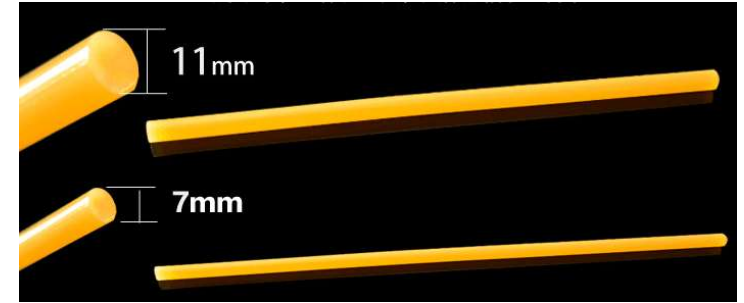




Bonkote Flux Pen 102



Replacement Tips Bonkote Pen



Hot Melt Glue Sticks



Solder Tip Cleaner



Solder Wire Wool



Solder Tip Cleaner

Sincotron – Soldering Accessories





Pink ESD Finger Cot



Cream Finger Cot



White Finger Cot



Black ESD Finger Cot



Black Finger Protector

Sincotron – Finger Cots





Sticky Mats



Silicone Sticky Rollers



Particle Counter



Standard Sticky Rollers



Clean Room Wipers



Clean Room Paper

Sincotron – Clean Room Consumables





Eye Loupe LED 30 x 21



Folding Pocket Magnifier



Eye Loupe LED 40 x 25



Eye Loupe LED 40 x 25



ESD Led Table Magnifier

Sincotron – Eye Loupes





Fume Extractor DX-1002



Desk Top Extractor TF-300



Fume Extractor DX-1001



Fume Extractor DX-6000

Sincotron – Fume Extractors





Ionizing Air Blower



Ionizing Air Nozzle



Ionizing Bar



Ionizing Dust Collecting Box

Sincotron – Ionizer Range





Bench Top Ionizer KF-10A



Bench Top 2 Fan Ionizer KF-40AH



Bench Top Ionizer KF-21AW



Overhead 3 Fan Ionizer KF-60AH



Overhead 5 Fan Ionizer KF-100AH

Sincotron – Ionizers





MINI Bench Top Ionizer KF-6W



Back Part MINI Bench Top Ionizer KF-6W



Overhead 4 Fan Ionizer KF-80AH



Overhead 7 Fan Ionizer KF-150AH



Overhead 6 Fan Ionizer KF-120AH

Sincotron – Ionizers





KE-36X



KE-60X



KE-84X



KE-108X



KE-132X



KE-156X

Sincotron – Ion Bars





Sincotron – Enviromental Test Chambers Range





Sincotron – Dry Cabinets



SINCOTRON FINLAND OY

Nihtisillankuja 3b,
FIN-02630 ESPOO
Finland

Tel: 358 10 422 35 80

Fax: 372 6 825 166

Email: tanel.koljal@sincotron.eu

www.sincotron.com

www.sincotron.com



SINCOTRON

